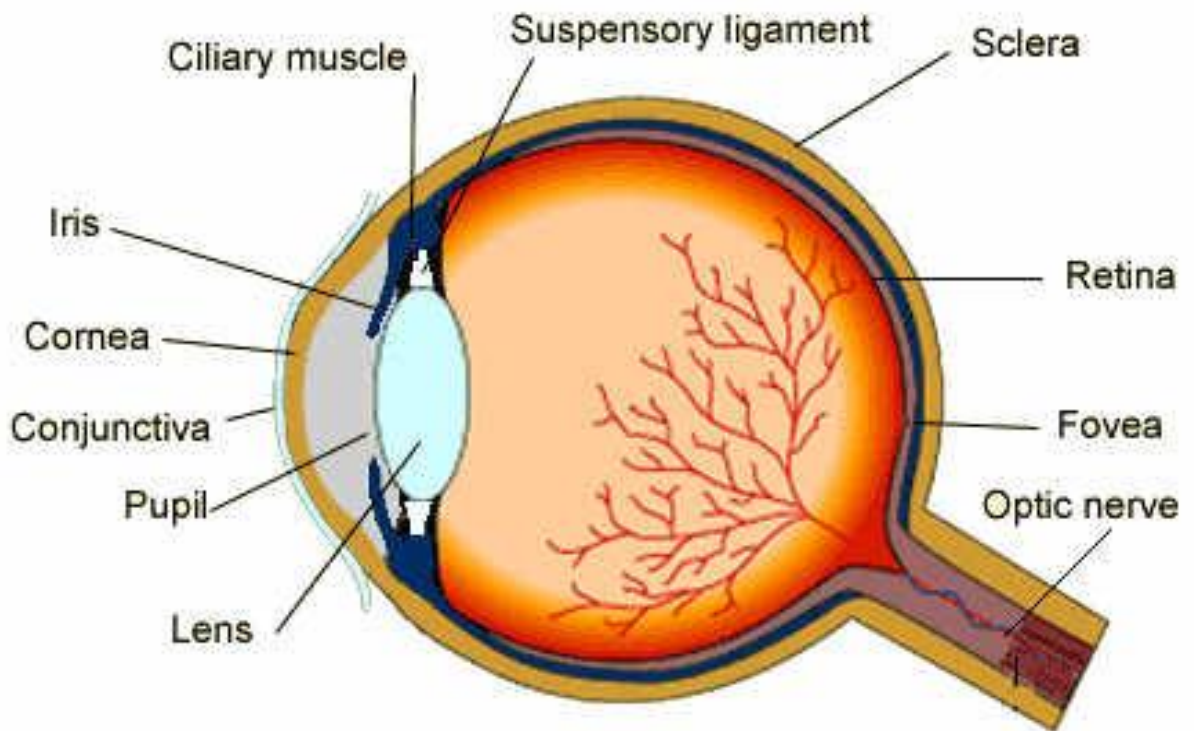


HUMAN BIOLOGY COURSE SYLLABUS



MR. HYLTON

SPRINGVILLE HIGH SCHOOL

TEACHER: Mr. Stephen Hylton

TEXT: Tortora, G., and B. Derrickson. *Introduction to the Human Body*, 7th Ed., John Wiley & Sons, 2007.

CLASS WEBSITE: my.uen.org/272988 (Click on the Human Bio tab)

INTRODUCTION:

Human Biology is a semester class studying the human body. It will require you to learn and memorize a great deal of terminology to be successful. However, it is very satisfying to learn and know how your body functions. Hopefully you will find it rewarding and enjoyable. You will earn 1/2 of a science credit toward graduation if you complete all the requirements and earn a passing grade.

THIS CLASS IS NO LONGER A UVU CONCURRENT ENROLLMENT COURSE

CLASS WORK:

This class will follow a lecture/lab format. You will be provided with a syllabus for taking notes. Exam questions will come directly from the text and syllabus.

Labs are a major part of the class. At least 25% of your grade each term will come from lab work.

This course deals with several “controversial” topics such as HIV infection (AIDS) and human reproduction. It will be necessary for you to get a form signed by your parents giving me permission to discuss these topics with you. More about that later..

You are expected to act like adults. If you don't, you will be given a verbal warning. An additional warning will bring a 25 point grade cut. A third will bring another 25 point cut and a call to your parents.

ATTENDANCE

It is my intention to follow Nebo School District's attendance policy. Attendance will count as 10% of the academic grade. Grades are calculated automatically by the district computer based on attendance taken during the day. This should provide adequate incentive to be in class and on time.

Major exams will be announced at least two class periods in advance and written on the notice board. It is your responsibility to know when they are scheduled and take them on time. Missed tests and quizzes **MUST** be taken **BEFORE** the next class period. A 20% penalty will be assessed for each class period missed in making up missed exams. Other missed work must be handed in within one week.

GRADE SCALE:

A	A-	B+	B	B-	C+	C	C-	D+	D	D-	F
100-93	92-87	86-83	82-80	79-77	76-73	72-70	69-67	66-63	62-57	56-50	<50

Extra Credit: May be done each term but can only raise your grade one step on the scale. Projects may include:

Research papers (individual) – 2-3 pages of original work with two references (no plagiarism).

Posters – (individual) – on a subject covered during the term.

Bulletin boards (up to 3 people) – on a subject that will be covered next term.

Class presentations (individual) – 10-15 minute presentation on some area of interest or expertise

Donating Blood

COURSE TOPICS/SCHEDULE:

This course is divided into eight units representing a systemic study of the human body. At the conclusion of each unit there will be a unit exam (100 points) and most units will also include a lab or related activity.

Units:

Labs/Activities

Term 1/3

Unit 1: Introduction to the Human Body
Unit 2: Skeletal System
Unit 3: Muscular System
Unit 4: Nervous/Sensory System

Lab: Body Plan
Lab: Bone Identification
Lab: Muscle Identification
Lab: Eye Dissection

Term 2/4

Unit 5: Cardiovascular System
Pressure, Blood Typing
Unit 6: Digestive System
Unit 7: Respiratory/Urinary Systems
Unit 8: Reproductive System

Labs: Heart Dissection, Blood
Lab: Salivary Amylase
Lab: Lung Volume